

M.S./M.Phil. & Ph.D.

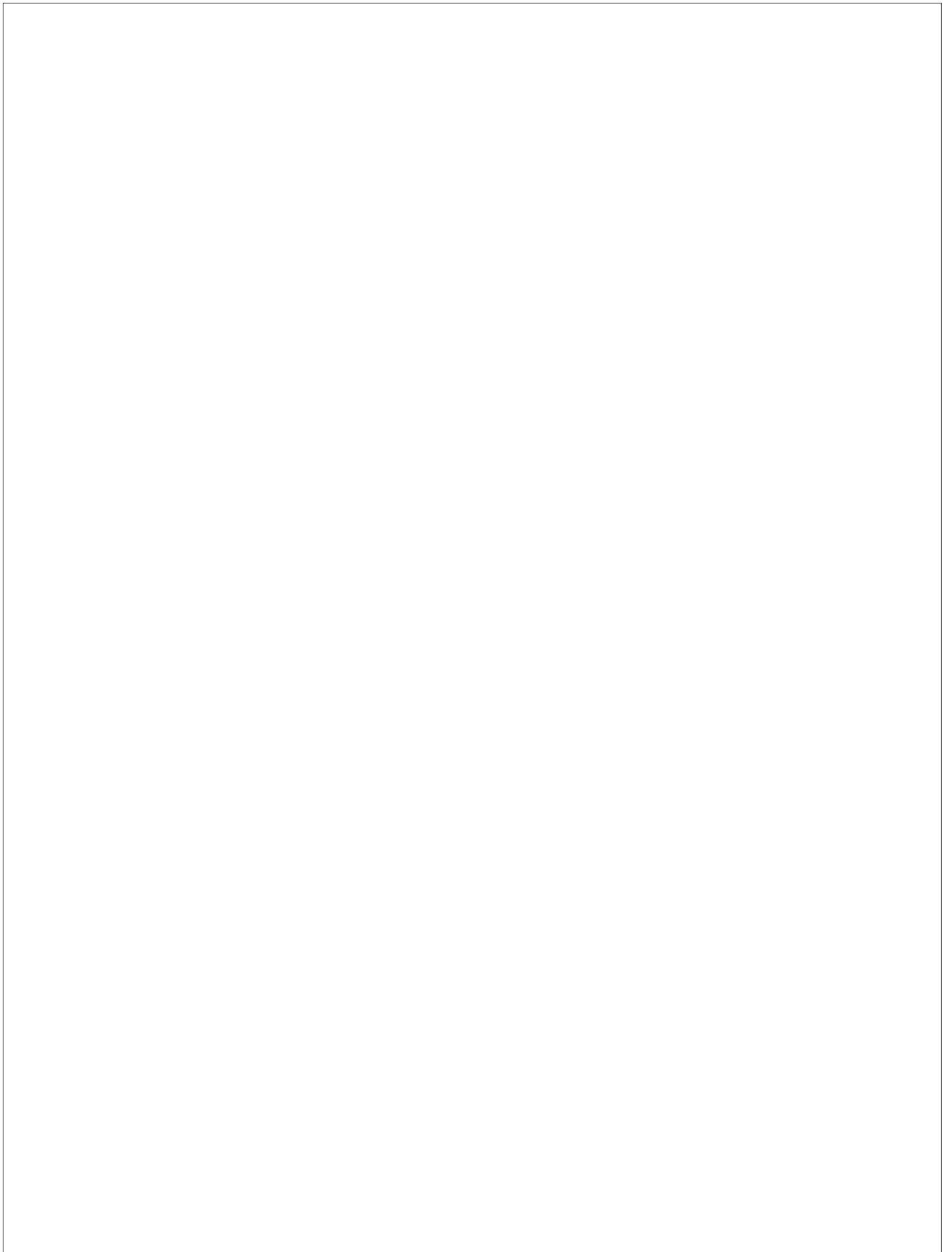
PROGRAMS

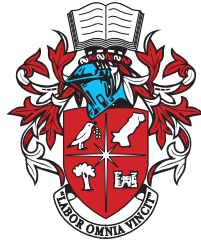


Greenwich University

KARACHI – PAKISTAN

www.greenwich.pk





Greenwich University

Karachi – Pakistan
www.greenwich.pk

M.S./M.Phil. & Ph.D. Programs

ORIC

OFFICE OF RESEARCH, INNOVATION & COMMERCIALIZATION

Table of Contents

<ul style="list-style-type: none"> ● The University 3 ● Postgraduate Studies & Research in Pakistan 4 ● Research Culture at Greenwich University 5 ● Postgraduate Degree Programs 7 <ul style="list-style-type: none"> ◆ Introduction 8 ◆ Objective 8 ◆ The Degree 8 ● Admission Requirements 10 ● Criteria for M.S./M.Phil. & Ph.D. Programs 10 <ul style="list-style-type: none"> ◆ M.S./M.Phil. Program 10 ◆ M.S./M.Phil. 10 ◆ Ph.D. Program 10 ◆ Subject Test 10 ◆ Course Work 11 ◆ Foreign Expert Evaluation 11 ◆ Open Defense 11 ◆ Research Paper 11 ◆ Plagiarism Test 11 ◆ Transfer Candidates 12 ◆ Application 12 ◆ Plan of Study and Research 12 <ul style="list-style-type: none"> ◆ Modification of Thesis 13 ◆ Publication of Results 13 ◆ Submission of Thesis 13 ◆ Evaluation of Thesis 14 ◆ Viva Voce / Open Defense 14 ◆ Publication Requirement 15 	<ul style="list-style-type: none"> ● Flow Diagram for Minimum Quality Criteria for M.S./M.Phil. & Ph.D. Degree ... 17 ● M.S./M/Phil. Degree Program ... 19 <ul style="list-style-type: none"> ◆ Business Administration 20 ◆ Economics 21 ◆ Education 22 ◆ English Literature 23 ◆ International Relations 24 ◆ Mass Communication & Media Studies 25 ◆ Political Science 26 ◆ Psychology 27 ◆ Public Administration 28 ◆ Social Work 29 ◆ Sociology 30 ● Ph.D. Degree Programs 31 <ul style="list-style-type: none"> ◆ Business Administration 32 ◆ Economics 34 ◆ Education 35 ◆ English 36 ◆ International Relations 37 ◆ Mass Communication & Media Studies 38 ◆ Political Science 39 ◆ Psychology 40 ◆ Public Administration/Public Policy ... 41 ◆ Social Work 42 ◆ Sociology 43 ● FAQs for M.S./M.Phil. & Ph.D. Programs ... 44
--	--

The University

The Greenwich University is recognized by both the Higher Education Commission of Pakistan and Chartered Inspection and Evaluation Committee (CI&EC) in top category. The saga of Greenwich University spans over 27 years.

The university is proud of its over 3,000 alumni already working as Corporate Leaders, Directors and Entrepreneurs and making effective use of their knowledge and skills for the development of the country.

The Greenwich University is also recognized by various international accreditation bodies, i.e, NAFSA (Association of International Educators), IAU (International Association of Universities), AACSB (Association of Advance Collegiate Schools in Business), APQN (Asia Pacific Quality Network), INQAAHE (International Network for Quality Assurance Agencies in Higher Education) solely, to foster a vivacious forum for the scholars and academicians. Besides this, Greenwich University has strategic collaboration with the universities in Turkey, Malaysia and Bangladesh.

The University focuses on quality education and in pursuit of its objective has a full-fledged self-reliant Research and Development Center to promote and support research culture among faculty members and students.

The Greenwich University has won Corporate Social Responsibility (CSR) Award 2012 & 2013, and Brand of the Year 2014 award. *By the Grace of God*, the University is ranked among the top universities of the country.

Postgraduate Studies & Research in Pakistan

Recently the number of disciplines under the broad category of Postgraduate Studies has significantly been increased along with the expansion in faculty members required for teaching these subjects. However, there are some crucial questions that are raised by this increase which still remain to be answered. These questions include:

- ◆ Has the quantitative increase in Postgraduate Studies & Research disciplines and faculty been accompanied by a corresponding qualitative improvement in research and studies of their disciplines?
- ◆ To what extent have they absorbed the ethos of research?
- ◆ To what degree have they developed an interdisciplinary orientation?
- ◆ How much of these developments have been shaped by society, culture, and the state?
- ◆ What impact has been absorbed globally in development of these contemporary knowledge issues?

Creation of the Office of Research, Innovation & Commercialization (ORIC) at Greenwich University is an attempt to answer such challenging questions.

The Greenwich University has adopted its inspiration and direction from the research & academic bodies which are endeavouring to tackle the emerging challenges. These international and local bodies create and maintain a peaceful, progressive and prosperous global society through knowledge, research, and better awareness of the world.

ORIC

OFFICE OF RESEARCH, INNOVATION & COMMERCIALIZATION

Research Culture at Greenwich University

The Greenwich University enjoys an international reputation as one of the principal seats of higher education in Pakistan. Greenwich has a long and great history of achievements, both in creating new knowledge and imparting this knowledge to generations of the future managers and leaders.

As a research-based university, Greenwich University is dedicated not only to the pursuance and dissemination of knowledge but also to the creation of new edification. Greenwich is a place where most modern teaching techniques are adopted.

The university enjoys the services of qualified Ph.D. professors and subject specialists to supervise the students and their research projects.

Much hard work, planning and thought have gone into the making of Office of Research, Innovation & Commercialization (ORIC) a platform for academic and professional explorers to plunge gainfully into the realms of investigation and scrutiny in varied disciplines and fields of human pursuits.

At ORIC, the students and faculty members – along with experts from government, semi-government and private multinational organizations - pursue research with the help of facilities available to meet the challenges of the 21st century. In addition, ORIC aims at promoting innovations through initiatives geared towards development of a world-class, dynamic and flexible research sector.

The objectives of ORIC are to promote and support research culture among faculty members and M.Phil., and Ph.D., students through preparation and submission of papers for seminars, conferences and research journals.

ORIC proposes to embark upon training in the fields of Basic Research, Applied Research, Quantitative Research, Qualitative Research, Development & Evaluation Research, Strategic Research, Investigator Driven Research, Priority Driven Research and Clinical Research, Policy and Systems Research.

ORIC also proposes training for all researchers, irrespective of their work place, and to collaborate with all research institutions in Pakistan and abroad. It also aims to promote healthy interaction among Greenwich faculty, students and alumni.

ORIC has undertaken Data Mining and building a Data Warehouse for future with the ultimate aim to develop ORIC branding, as “Greenwich Research & Consultancy”.

Greenwich University, under the Faculty of Social Sciences & Humanities publishes research journal, the ‘New Horizons’, and under the Faculty of Management Sciences publishes ‘Journal of Business Strategies’.

Acknowledging the level of research in the research journals of Greenwich University, the Higher Education Commission has recognized both the journals.

G-Vision is a quarterly magazine of Greenwich. Our students who are interested in writing, express their ideas through this publication.

Positive Post is a monthly newsletter made up of a compilation of news by student of Greenwich University, Department of Mass Communication & Media Studies to highlight the positive aspect of Pakistan.

**POSTGRADUATE
DEGREE PROGRAMS**

M.S./M.Phil. & Ph.D.

1. Introduction

Greenwich University offers post-graduate programs in different fields of Management Sciences and Social Sciences. These courses are designed for students who have strong desire to pursue research oriented career. M.S./M.Phil. & Ph.D., degree programs are offered in the specialized fields falling under the Faculties of Management Sciences, Social Sciences & Humanities.

2. Objective

The objective of this postgraduate program is to inculcate in students the qualities of creative thinking, analytical study, initiative and originality in planning and implementing a research program. To achieve these goals, Greenwich University helps:

- a) to impart in-depth knowledge of subjects through its doctoral faculty to its postgraduate students to acquire expertise in the areas of study.
- b) to give the advance tools and techniques in research to acquire the latest and broad based knowledge of the field of study.
- c) to guide the students in extensive research training to enable them to conduct research independently.

3. The Degree

- a) The degree will be research based conducted through course work and dissertation/thesis for MS/ M.Phil. & Ph.D. programs.
- b) Lectures and seminars shall be arranged by the concerned department to acquaint students with the latest techniques of research.

c) The thesis shall be a piece of work embodying either a discovery of new facts or a fresh interpretation of facts or theories. In either case, the work should show the candidate's capability for critical examination and judgment.

Admission Requirements

Criteria for Admission in M.S./M.Phil. & Ph.D. Programs

The minimum requirements for admission in M.S./M.Phil. & Ph.D. programs (as approved by HEC) are as follows:

M.S./M.Phil. Program

1. For admission in M.S./M.Phil., a sixteen years of schooling or 4 year education (124 credit hours) after HSSC/ F.A./ F.Sc/ Grade 12 equivalent will be required for admission.
2. The GAT-General conducted by the National Testing Service with a minimum 50% cumulative score will be required at the time of admission to M.S./M.Phil. The GAT-General Test is valid for a period of two years or a candidate has to pass Greenwich University Postgraduate Admission Test, and an interview prior to admission in M.Phil. Program.
3. For award of M.S./M.Phil. candidate will complete 24 credit hours of course work along with a minimum of 6 credit hours for research work/thesis.

Ph.D. Program

1. For admission in Ph.D., minimum CGPA 3.0 (out of 4.0 in the semester system) or first division (in the annual system) in M.Phil/ M.S/ equivalent degree is required.

Subject Test

2. A subject test conducted by the National Testing Service (NTS) in the area of specialization chosen at the Ph.D. level must be cleared prior to admission for the Ph.D. program, **or** the student has to clear

Greenwich University Admission Test and interview prior to admission in Ph.D. Program.

- a. In case of GAT subject test
(<http://www.nts.org.pk/GAT/GATSubject.asp>), a minimum of 60% marks are required to pass the test.
- b. In case of GRE subject test, the minimum score will be 60% (percentage score), **or**, the Greenwich University Postgraduate Admission Test should be cleared by a candidate.

Course Work

3. Course work of 18 credit hours preferably in the first year, is required to be completed and followed by a comprehensive examination for granting candidacy as a Ph.D. scholar.

Foreign Expert Evaluation

4. The Ph.D. dissertation has to be evaluated by at least two Ph.D. experts from technologically / academically advanced foreign countries in addition to local committee members.

Open Defense

5. An open defense of dissertation is essential part of Ph.D. Program after positive evaluation.

Research Paper

6. Acceptance/ publication of at least one research paper based on the Ph.D. research in an HEC approved “Y” category journal is a requirement for the award of Ph.D. degree.

Plagiarism Test

7. Plagiarism test will be conducted on the Dissertation before its submission to the two foreign experts.

Transfer Candidates

a) M.S./M.Phil.

Transfer credits may be considered for courses having B grade (72%) or above from a recognized university. The request must be made at the time of admission/ applying for transfer. Admission Test/ Interview will be conducted.

b) Ph.D.

Transfer of credits may be considered for courses having grade B (72%) or above from a recognized university. The request must be made at the time of admission/ applying for transfer. Admission Test/ Interview will be conducted.

Application

- a) The candidate shall apply for admission on the prescribed form.
- b) The candidate may have to take the pre-requisite course work according to the eligibility criteria and as advised by the department.

Plan of Study and Research

M.S./M.Phil. Degree

- Total Credit Hours 30
- Course Work 08 Courses each of 3 Credit hrs.
- Research 06 Credit hrs.
- Minimum passing grade is B (72%) in individual subjects as well as the aggregate score. Maximum duration of passing an M.Phil Program is 5 years.

Ph.D. Degree

- Total Credit Hours 36
- Course Work 06 Courses each of 3 Credit hrs.
- Research 18 Credit hrs.
- Minimum passing grade is B (72%) in individual subjects as well as the aggregate score. Maximum duration of passing a Ph.D. Program is 7 years.

Modification of Thesis

A candidate may modify the topic of research with the approval of the supervisor by submitting an application to the Board of Advanced Study and Research (BASR). In such cases the BASR shall determine the minimum duration after which the thesis may be submitted.

Publication of Results

Research scholars for M.S./M.Phil. & Ph.D. degree may publish the results or part of their research work prior to submission of their dissertation/ thesis, to avoid the risk of losing priority. Information to these effects shall be communicated to the Registrar/ Director BASR of the University before the submission of research papers for publication. Inclusion of the reprints of published work or pre-print is permissible along with the dissertation/ thesis.

Submission of Thesis

- a) Both M.S./M.Phil. & Ph.D. thesis shall be prepared in English language according to standard format as approved by the University.
- b) An unbound manuscript (semi-final-draft) duly checked and signed by the supervisory committee and recommended by the Dean of the Post Graduate Studies shall be submitted to the BASR for scrutiny and approval before final typing.
- c) The BASR will permit the student to deliver a seminar on his/her research (thesis) work before final typing and submission of the manuscript of the thesis.
- d) The seminar shall be open to the teachers, students and all those who may be interested. The student shall incorporate in his/her thesis, suggestions, if any, made at the seminar and approved by the supervisory committee.
- e) After seminar, the student will be eligible to submit his/her thesis for final examination.

- f) The student shall submit six (6) copies of the bound thesis as per requirement of the university to concerned faculty Dean, who will retain one copy of the thesis for departmental library, send one copy to the University and four copies to the Controller of Examination.

Evaluation of Thesis

- a) BASR in consultation with the supervisor, shall recommend the panel of three external evaluators for MS Degree evaluation and five external evaluators for Ph.D. Degree Examination. There shall be two examiners [one internal (supervisor) and the other external] for the M.S. Degree, and three examiners [one internal (supervisor) and two externals (from technologically advanced countries)] for Ph.D. Degree.
- b) The theses are sent for the external examiner(s) for evaluation. After the evaluation, the theses are returned to the Controller of Examinations who in consultation with the BASR, arranges for conducting the Viva-Voce examination.
- c) The examiners will forward their evaluation reports separately to the Controller of Examinations for presentation to the BASR.
- d) In Ph.D. thesis if two external evaluators from academically/ technologically advance countries give positive remarks about the thesis, it shall be accepted.

Viva Voce / Open Defense

For M.S./M.Phil. Degree

The BASR on receipt of evaluation report shall arrange for a viva voce / open defense to be conducted, alongwith at least two examiners, one of whom shall be the research supervisor.

For Ph.D. Degree

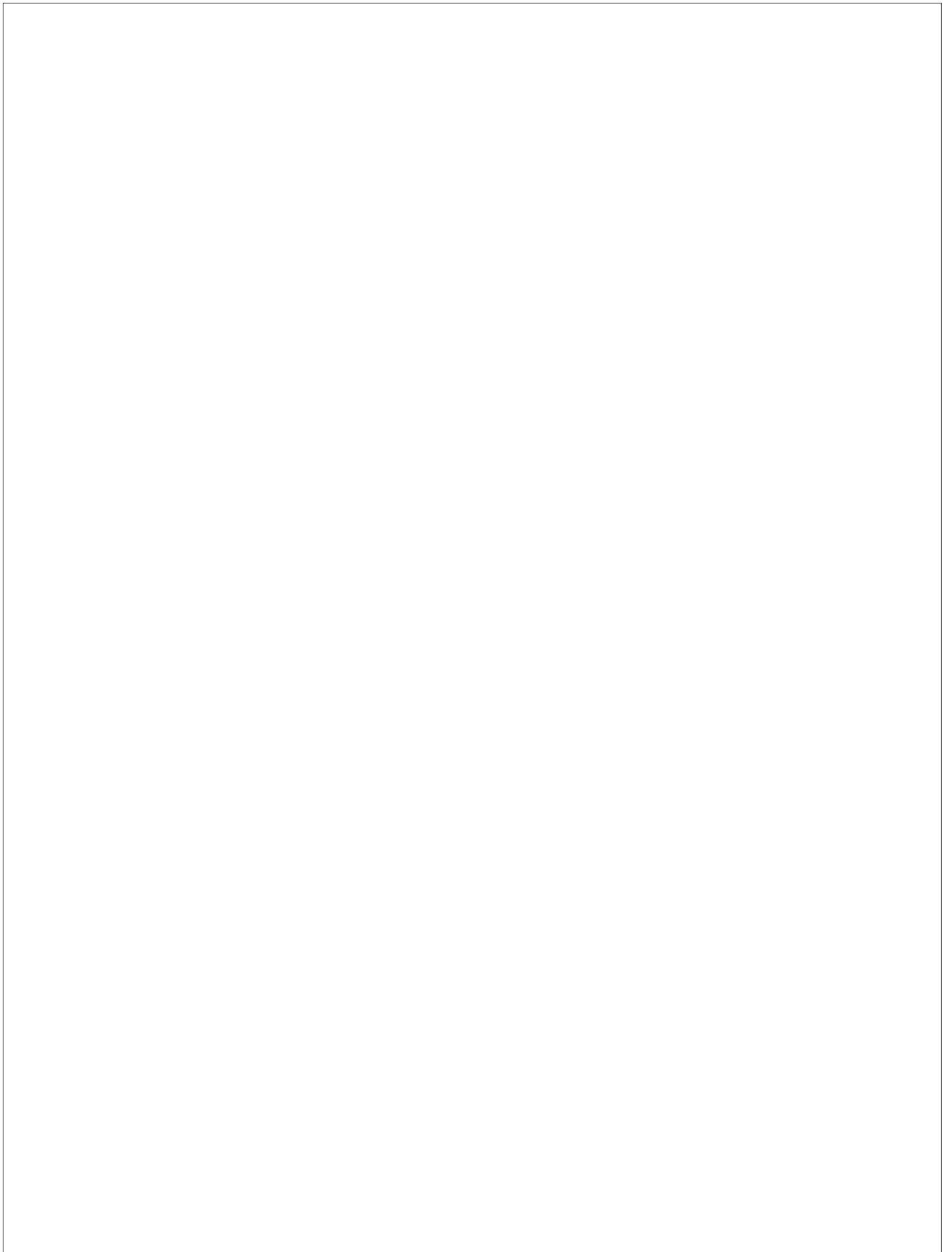
The viva voce/ open defense is conducted by the three examiners (One internal supervisor and two external examiners).

After receiving the report of viva voce examination, the BASR shall make recommendation to finally decide the conferment of the Degree.

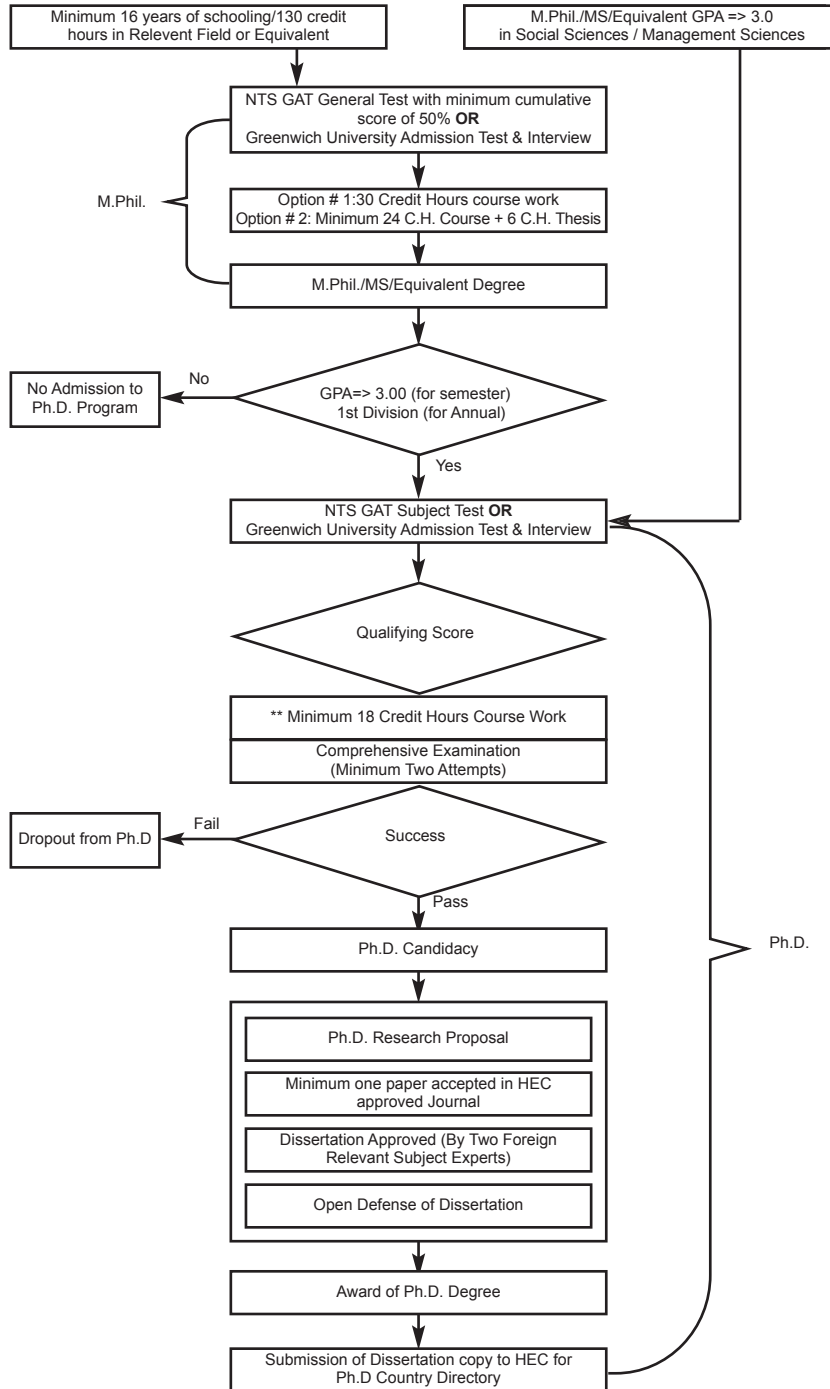
In case viva voce report is not found satisfactory another viva voce examination may be held not before 3 months and not after one year, and that shall be the final examination.

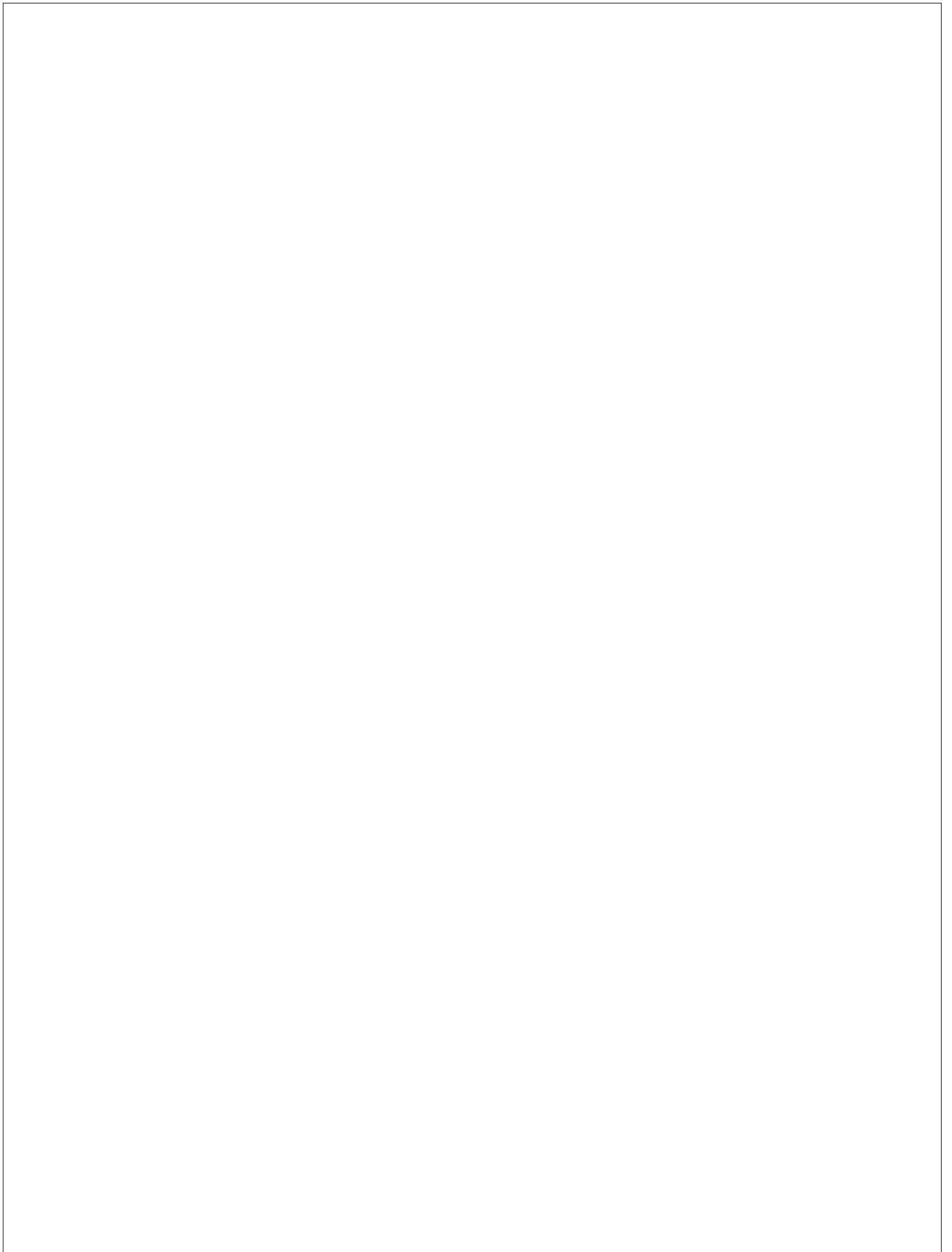
Publication Requirement

All Ph.D. candidates are required to write a paper, based on Ph.D. research work and submit it for publication in HEC approved journal in 'Y' category. This paper must be published before the viva voce / open defense.



Flow Diagram for Minimum Quality Criteria for M.S./M.Phil. & Ph.D. at Greenwich University as per HEC Requirements





M.S./M.Phil. Degree Programs

Courses for M.S./M.Phil. and Ph.D. programs will be offered every semester with the choice of the Dean's Office.

M.S. / M.Phil. Program

30 CREDIT HOURS (08 Courses of 03 Cr. Hrs. each and Dissertation 06 Cr. Hrs.)

Business Administration

1. Qualitative Research
2. Quantitative Research
3. Human Resource Management
4. Advance Stats and Computer Skills
5. Conflict Resolution
6. Current Issues of Pakistan

Management

7. International Political Economy
8. Good Governance and Corporate Social Responsibility
9. Financial Planning
10. International Marketing
11. Brand and Marketing Management
12. Managerial Economics
13. Operational Management
14. Organizational Theory
15. Environmental and Risk Management

Marketing

1. Cyber & Internet Marketing
2. Logistics Management
3. Project Management
4. Retail/Whole Sale Marketing

Finance

1. Investment and Portfolio Management
2. Islamic Financial System
3. Risk Management
4. Taxation Management

Human Resource Management

1. Industrial Management
2. Organizational Development and Dynamics
3. Performance Management
4. Training and Development

Research:

1. Dissertation I
2. Dissertation II

M.S. / M.Phil. Program

30 CREDIT HOURS (08 Courses of 03 Cr. Hrs. each and Dissertation 06 Cr. Hrs.)

Economics

1. Qualitative Research
2. Quantitative Research
3. Human Resource Management
4. Advance Stats and Computer Skills
5. Conflict Resolution
6. Current Issues of Pakistan
7. International Political Economy
8. Good Governance and Corporate Social Responsibility
9. Advance Econometrics
10. Money & Banking
11. Financial Market Institution (FMI)
12. Monetary Economics
13. Globalization and Economics
14. Economics and population Dynamics
15. Economics of Environmental & Natural Resources
16. Theory of Development Economics

Research:

1. Dissertation I
2. Dissertation II

M.S. / M.Phil. Program

30 CREDIT HOURS (08 Courses of 03 Cr. Hrs. each and Dissertation 06 Cr. Hrs.)

Education

1. Qualitative Research
2. Quantitative Research
3. Advance Stats and Computer Skills
4. Classroom Pedagogies
5. Educational Psychology
6. Current Issues of Pakistan
7. Curriculum Development
8. Academic Counselling
9. Teaching & Learning Strategies
10. Education Policy & Management
11. Education Governance
12. Organizational Behaviour in Education

Research:

1. Dissertation I
2. Dissertation II

M.S. / M.Phil. Program

30 CREDIT HOURS (08 Courses of 03 Cr. Hrs. each and Dissertation 06 Cr. Hrs.)

English Literature

1. Qualitative Research
2. Quantitative Research
3. Literary Criticism Theory
4. Comparative Literature
5. Elizabethan Drama
6. American Literature
7. Modern Contemporary Fixation
8. Modern Contemporary Drama
9. American Literature (Drama & Poetry)
10. Age of Romanticism in Poetry
11. Place of Novels in Literature

Research:

1. Dissertation I
2. Dissertation II

M.S. / M.Phil. Program

30 CREDIT HOURS (08 Courses of 03 Cr. Hrs. each and Dissertation 06 Cr. Hrs.)

International Relations

1. Qualitative Research
2. Quantitative Research
3. Human Resource Management
4. Advance Stats and Computer Skills
5. Conflict Resolution
6. Current Issues of Pakistan
7. International Political Economy
8. Good Governance and Corporate Social Responsibility
9. International Relations (Advance Theory & Practice)
10. World Politics
11. Muslim World
12. Foreign Policy Analysis
13. Foreign Policy of Great Powers
14. Contemporary Trends in International Law
15. Foreign Policy of Pakistan
16. Globalization and World Affairs

Research:

1. Dissertation I
2. Dissertation II

M.S. / M.Phil. Program

30 CREDIT HOURS (08 Courses of 03 Cr. Hrs. each and Dissertation 06 Cr. Hrs.)

Mass Communication & Media Studies

1. Qualitative Research
2. Quantitative Research
3. Human Resource Management
4. Advance Stats and Computer Skills
5. Conflict Resolution
6. Current Issues of Pakistan
7. International Political Economy
8. Good Governance and Corporate Social Responsibility
9. Mass Media in Society
10. Writing for Media (Print & Electronics)
11. Media Criticism
12. Ethics of Communication & Media
13. Advertising & Creativity
14. Media Relation Management
15. Management Information System
16. Analyzing the Media Audience
17. Seminar on Research Design & Individual Report Project
18. Broadcasts Media
19. Development Support Communication

Research:

1. Dissertation I
2. Dissertation II

M.S. / M.Phil. Program

30 CREDIT HOURS (08 Courses of 03 Cr. Hrs. each and Dissertation 06 Cr. Hrs.)

Political Science

1. Qualitative Research
2. Quantitative Research
3. Human Resource Management
4. Advance Stats and Computer Skills
5. Conflict Resolution
6. Current Issues of Pakistan
7. International Political Economy
8. Good Governance and Corporate Social Responsibility
9. Political Thought –West and Islam
10. Globalization and Pakistan Politics
11. Politics of South Asia/ Middle East/ Muslim World
12. Foreign Policy Analysis
13. International Law
14. Theory of International Relations
15. Political Economy of Pakistan
16. Constitutional Development of Pakistan

Research:

1. Dissertation I
2. Dissertation II

M.S. / M.Phil. Program

30 CREDIT HOURS (08 Courses of 03 Cr. Hrs. each and Dissertation 06 Cr. Hrs.)

Psychology

1. Qualitative Research
2. Quantitative Research
3. Human Resource Management
4. Advance Stats and Computer Skills
5. Conflict Resolution
6. Current Issues of Pakistan
7. International Political Economy
8. Good Governance and Corporate Social Responsibility
9. Seminars In Theories of Psychology
10. Techniques and Tools of Psychology
11. Psychology – Diagnosis
12. Approaches to Psychology
13. Adolescent Behavioral Problem
14. Experimental Psychology

Research:

1. Dissertation I
2. Dissertation II

M.S. / M.Phil. Program

30 CREDIT HOURS (08 Courses of 03 Cr. Hrs. each and Dissertation 06 Cr. Hrs.)

Public Administration/Public Policy

1. Qualitative Research
2. Quantitative Research
3. Human Resource Management
4. Advance Stats and Computer Skills
5. Conflict Resolution
6. Current Issues of Pakistan
7. International Political Economy
8. Good Governance and Corporate Social Responsibility
9. Introduction to Public Administration & Public Policy
10. Urban Development and Governance
11. Government and Politics in Pakistan
12. Political Economy of Pakistan
13. Human Behavior and Public Organization
14. Human Rights and Development
15. Operational Management

Research:

1. Dissertation I
2. Dissertation II

M.S. / M.Phil. Program

30 CREDIT HOURS (08 Courses of 03 Cr. Hrs. each and Dissertation 06 Cr. Hrs.)

Social Work

1. Qualitative Research
2. Quantitative Research
3. Human Resource Management
4. Advance Stats and Computer Skills
5. Conflict Resolution
6. Current Issues of Pakistan
7. International Political Economy
8. Good Governance and Corporate Social Responsibility
9. History & Philosophy of Social Work
10. Gender & Development
11. Social Policy, Planning & Welfare Administration
12. Population Planning & Social Legislation
13. NGO Management & Leadership
14. Human Rights
15. Social Development & Its Impact Upon Society
16. Social Action & Its Reflection
17. Psychiatric Social Work
18. Juvenile Delinquency
19. Impact of Poverty on Social Development
20. Child Protection & Child Labor

Research:

1. Dissertation I
2. Dissertation II

M.S. / M.Phil. Program

30 CREDIT HOURS (08 Courses of 03 Cr. Hrs. each and Dissertation 06 Cr. Hrs.)

Sociology

1. Qualitative Research
2. Quantitative Research
3. Human Resource Management
4. Advance Stats and Computer Skills
5. Conflict Resolution
6. Current Issues of Pakistan
7. International Political Economy
8. Good Governance and Corporate Social Responsibility
9. Sociological Theories
10. Sociological Statistics
11. Social Problems of Pakistan
12. Demographic Studies of Pakistan
13. Theory Construction and Sociological Perspectives
14. Sociology of Development
15. Community Development and Social Issues
16. Women and Social Development
17. Seminar on Sociological Issues in Pakistan

Research:

1. Dissertation I
2. Dissertation II

Ph.D. Degree Programs

Ph.D. Program

36 CREDIT HOURS (06 Courses of 03 Cr. Hrs. each and Thesis 18 Cr. Hrs.)

Business Administration

1. Advanced Qualitative Research
2. Advanced Quantitative Research

Select Four (04) courses from the following disciplines.

Management

3. Organizational Behaviour
4. Entrepreneurship
5. Quantitative Methods in Management Sciences
6. Media Management
7. International Trade Finance
8. Change Management
9. Strategic Management
10. Operation Management

Marketing

3. Consumer Behavior
4. Media Marketing
5. Quantitative Methods in Management Sciences
6. Marketing Research Model
7. International Trade Finance
8. Strategic Marketing
9. International Marketing
10. Brand Management

Finance

3. Econometrics
4. Strategic Valuation
5. Venture Capital
6. Financial Engineering
7. International Trade Finance
8. Risk Management
9. Investment and Portfolio Management
10. Financial Statement Analysis

Human Resource Management

3. Change Management
4. Leadership & Team Management
5. Quantitative Methods in Management Sciences
6. Training & Development
7. Project Resource Management
8. Performance Management
9. Recruitment & Selection
10. Multicultural Management

Research:

1. Thesis I
2. Thesis II
3. Thesis III
4. Thesis IV

Ph.D. Program

36 CREDIT HOURS (06 Courses of 03 Cr. Hrs. each and Thesis 18 Cr. Hrs.)

Economics

1. Advanced Qualitative Research
2. Advanced Quantitative Research
3. Environmental Economics
4. Microeconomics
5. Macroeconomics
6. Applied Econometrics-I
7. Applied Econometrics-II
8. Econometric of Cross-Section and Panel Data
9. International Trade and Development
10. Development Economics
11. Industrial Organization and Regulation
12. Labor Economics
13. Research in Applied Economics
14. Economics of Human Recourse
15. Economics Issue in Education
16. Organizational Economics
17. History of Economic Thought
18. Advance Public Finance
19. Economics of Financial Markets

Research:

1. Thesis I
2. Thesis II
3. Thesis III
4. Thesis IV

Ph.D. Program

36 CREDIT HOURS (06 Courses of 03 Cr. Hrs. each and Thesis 18 Cr. Hrs.)

Education

1. Advanced Qualitative Research
2. Advanced Quantitative Research
3. Proseminar in Curriculum, Instruction, and Teacher Education I
4. Proseminar in Curriculum, Instruction, and Teacher Education II
5. Psychology of Study of Teaching
6. Psychological and Cognitive Aspects of Literacy Learning
7. Contemporary Theories and Discourses in Education
8. Discipline knowledge and School Subjects
9. Policy Analysis in Education
10. Social Analysis of Education Policy
11. Learning to Teach
12. Comparative Perspectives on Teaching, Curriculum & Teacher Education
13. Philosophy of Education
14. Introduction to Quantitative Methods in Educational Research
15. Introduction to Qualitative Methods in Educational Research
16. Curriculum deliberation and Development
17. Using Literacy to Learn; Curriculum and Pedagogy
18. Language, Literacy, and Educational Policy
19. Curriculum and Pedagogy in Teacher's Education
20. Teacher Learning in School Settings
21. Seminar in Curriculum, Instruction, and Teacher Education
22. Independent Study
23. Laboratory and Field Experience in Curriculum, Instruction, and Teacher Education

Research:

1. Thesis I
2. Thesis II
3. Thesis III
4. Thesis IV

Ph.D. Program

36 CREDIT HOURS (06 Courses of 03 Cr. Hrs. each and Thesis 18 Cr. Hrs.)

English

1. Advanced Qualitative Research
2. Advanced Quantitative Research
3. Literary Criticism & Theory
4. American Literature
5. Elizabethan Drama
6. Modern & Contemporary Fiction
7. Modern & Contemporary Poetry
8. Romantic Aesthetics
9. Post Colonial Studies
10. 18th Century Literary Vision
11. Aesthetics & Literary Genres
12. World Literature in Translation

Research:

1. Thesis I
2. Thesis II
3. Thesis III
4. Thesis IV

Ph.D. Program

36 CREDIT HOURS (06 Courses of 03 Cr. Hrs. each and Thesis 18 Cr. Hrs.)

International Relations

1. Advanced Qualitative Research
2. Advanced Quantitative Research
3. International Relations Theory
4. World Economic Forum
5. Foreign Policy and Diplomatic Behaviour
6. Constitutional Development in Pakistan
7. Comparative Politics Theory
8. Study of SAARC
9. Corporate Governance
10. Diplomatic History and Current Era of IR

Research:

1. Thesis I
2. Thesis II
3. Thesis III
4. Thesis IV

Ph.D. Program

36 CREDIT HOURS (06 Courses of 03 Cr. Hrs. each and Thesis 18 Cr. Hrs.)

Mass Communication and Media Studies

1. Advanced Qualitative Research
2. Advanced Quantitative Research
3. Seminar on Media Effectiveness:
4. Seminar on Multiculturalism and Social Diversity in Pakistan:
5. Media and Post – Colonialism
6. Digital Activism and Democracy
7. Media Convergence
8. Advanced Theories of Media and Culture
9. Communication Strategies in Negotiations and Conflict Resolution
10. Issues in International Media
11. Media, Politics and Governance
12. Media, Art and Technology
13. Visual Cultures of Pakistan
14. Media Ethics and Responsibility
15. History of Mass Media

Research:

1. Thesis I
2. Thesis II
3. Thesis III
4. Thesis IV

Ph.D. Program

30 CREDIT HOURS (06 Courses of 03 Cr. Hrs. each and Dissertation 12 Cr. Hrs.)

Political Science

1. Advanced Qualitative Research
2. Advanced Quantitative Research
3. Pakistan and Contemporary World
4. Govt & Politics of Pakistan
5. Gender Studies
6. Comparative Politics Theory
7. Corporate Governance
8. Conflict Resolution & Peace Study
9. Federal Politics of Pakistan
10. Provincial & Local Governments in Pakistan

Research:

1. Thesis I
2. Thesis II
3. Thesis III
4. Thesis IV

Ph.D. Program

36 CREDIT HOURS (06 Courses of 03 Cr. Hrs. each and Thesis 18 Cr. Hrs.)

Psychology

1. Advanced Qualitative Research
2. Advanced Quantitative Research
3. Cognitive Psychology
4. Psychology of Social Behavior
5. Theories of Personality
6. Child Development
7. Physiological Basis Of Abnormal Behavior
8. Psychology of Violence
9. Personality Disorders
10. Modern Psychology Treatment
11. Culture, Thought, and Emotion
12. Conflict and Negotiation
13. Love and Attachment in Adult Relationships
14. Gender Roles
15. Counseling Psychology
16. Psychology of Adolescence
17. Cross-Cultural Psychology
18. Applied Research Methods
19. Work Motivation and Attitudes
20. Leadership and Strategic Change
21. Conflict and Negotiation
22. Psychology of Decision Making
23. Group Dynamics
24. Psychology of Diversity
25. Independent Study

Research:

1. Thesis I
2. Thesis II
3. Thesis III
4. Thesis IV

Ph.D. Program

36 CREDIT HOURS (06 Courses of 03 Cr. Hrs. each and Thesis 18 Cr. Hrs.)

Public Administration/Public Policy

1. Advanced Qualitative Research
2. Advanced Quantitative Research
3. Philosophy of Social Science
4. Introduction to Public Administration/ Public Policy
5. Public Policy & Social Development in Pakistan
6. Seminar Research Writing
7. Internal Migration and Public Policy in Pakistan
8. Civil-Military Bureaucracy in Pakistan
9. Public Finance and Public Policy in Pakistan
10. Urban Development and Modernization in Pakistan

Research:

1. Thesis I
2. Thesis II
3. Thesis III
4. Thesis IV

Ph.D. Program

36 CREDIT HOURS (06 Courses of 03 Cr. Hrs. each and Thesis 18 Cr. Hrs.)

Social Work

1. Advanced Qualitative Research
2. Advanced Quantitative Research
3. Philosophy of Social Sciences
4. Social Sciences & Social Policy
5. Women & the Family
6. Communities & Organization
7. Social Policy on Mental Health
8. Independent Study
9. Social Statistics
10. Delinquency, Corrections & Human Treatment
11. Rural Human Services
12. Helping Strategies with Children Adolescents
13. Contemporary issues in Domestic Violence
14. Social Work and Disasters
15. Critical Issues in Child Welfare
16. Seminar in Internal Migration & Social Change
17. Seminar on Sociology Theories of Aging 7 Adult life
18. Supervision, Consultation & Staff Training
19. Women, Poverty & Mental Health
20. Human Behavior & Diverse population
21. Poverty in Equality & Social Policy

Research:

1. Thesis I
2. Thesis II
3. Thesis III
4. Thesis IV

Ph.D. Program

36 CREDIT HOURS (06 Courses of 03 Cr. Hrs. each and Thesis 18 Cr. Hrs.)

Sociology

1. Advanced Qualitative Research
2. Advanced Quantitative Research
3. Contemporary Sociology Theory
4. Philosophy of Social Sciences
5. Formal Organizational & Bureaucracy
6. Social Movement & Collective Behavior
7. Social Stratification
8. The City and Urbanization
9. Economy & Society
10. Seminars on Internal Migration & Social Change
11. Sociology of the Islamic World
12. Political Sociology
13. Sociology of Health & Mental Illness
14. Sociology of Education
15. Law & Society
16. Religion & Society
17. Race, Class & Gender
18. Sociology of Emotions
19. Social Problems of Developing Society
20. Poverty & Public Policy
21. Human Behavior & Ethnicity
22. Statistics for Sociology
23. Seminar on Sociological Research
24. Seminar on Marriage & Family
25. Seminars on Sociological Theories of Aging & Adult Life
26. Theory of Demography
27. Seminar on Socialization & Group Process
28. Theory of Globalization

Research:

1. Thesis I
2. Thesis II
3. Thesis III
4. Thesis IV

Frequently Asked Questions (FAQs) for M.S./M.Phil. and Ph.D Programs

Q. For M. Phil/M.S degree total 30 credit hours are required out of which 24 credit hours are for course work. Can I complete 30 credit hours by course work?

A. Greenwich University awards research based degree. Therefore, 6-credit hours is mandatory for M.S./M.Phil. Degree Program besides course work credit hours.

Q. I have acquired 2.8 CGPA in M.S. and have submitted a Ph.D. application to the University, which is denying admission and is asking for 3.0 CGPA in M.S. for admission in the Ph.D. program.

A. One of the minimum requirements of HEC for admission into Ph.D. program is 3.0 CGPA in M.S./M.Phil. degree.

Q. I am currently registered in Ph.D. Could you please update me regarding the condition of International GRE Subject Test. Is the condition abolished?

A. No the condition is there but HEC has approved to accept the GAT Subject Test (NTS) for Ph.D. admissions in those eight subjects where the International GRE Subject is offered.

Q. I have already cleared the International GRE / University based Subject Test (approved by HEC) with the requisite percentile/ cumulative score. Should I also appear for NTS GAT Subject Test?

A. Students who have already cleared the International GRE/ University based Subject Test (approved by HEC) and achieved the requisite percentile/ accumulative score are not required to clear the NTS GAT Subject Test. You may clear Greenwich University Admission Test instead.

Q. Can I take provisional admission in Ph.D. in the forthcoming semester without passing the International GRE/NTS GAT Subject Test.

A. The University may provide provisional admission to Ph.D. students who have not cleared the International GRE/NTS GAT Subject Test. However, it is

mandatory for the student to clear the International GRE/NTS GAT Subject Test within a period of one year, or you may clear Greenwich University Admission Test and Interview.

Q. What is meant by Comprehensive Exam?

A. Comprehensive Exam is a requirement for all doctoral programs, and precedes defense of the Ph.D. research proposal. The student must pass both the written and oral components after the completion of 18 credit hours course work. Successful completion of both the comprehensive exam and the Ph.D. research proposal must be completed before a student can be granted Doctoral Candidacy status.

Q. I have completed course work for Ph.D. Is it necessary to appear in the comprehensive examination? What score should be acquired for qualifying that exam?

A. Yes, comprehensive examination is mandatory and it should be qualified. Qualifying score is 60%.

Q. What does an Open Defense mean?

A. The defense is done in a public presentation in which teachers, students, and the general public can participate. The scholar presents his/her research work and answers the questions of the audience. Public thesis defense is mandatory, in the presence of a board of senior researchers, consisting of members from an outside organization or a university. The University will notify in advance the date, time and venue of the event via its website.

Q. Previously 'Y' Category Journal in Sciences was accepted for publication of paper for Ph.D. degree, now, it is 'X' Category.

A. The condition of Publication in "X" category is applicable with effect from January 11, 2010 for Journals in Sciences. However, for Management & Social Sciences, it remains 'Y' Category.

Q. What is the Greenwich University requirement for thesis writing format?

A. For Management & Social Sciences BASR Greenwich University follows APA 6th edition format.

Q. My Ph.D. thesis is evaluated with favorable comments by foreign experts. University is not processing my case for final seminar, because they are asking for second evaluation.

A. The evaluation of thesis by two foreign experts with positive comments/ recommendations is minimum requirement of HEC.

Q. Who is responsible for sending the thesis to foreign evaluators for evaluation?

A. The BASR will appoint the external evaluators to send the thesis to foreign experts for the evaluation It will be sent by the Controller of Examination.

Q. Can a Supervisor supervise the thesis of his/her relative?

A. Ethically, it is not a good practice to supervise the thesis of son/ daughter/ wife/ husband/ or any other close relation which may cause conflict of interest in any terms.

Q. Can Ph.D. open defense be conducted in absence of the supervisor?

A. The open defense and/or coupled with in-camera defense should NOT be conducted without the participation (real or virtual) of the Internal Supervisor.

Q. Can the supervisor attend the open defense through video conferencing?

A. Yes, the Supervisor can attend the open defense or through Video-conference facility ensuring the sanctity of examination preserved.

Q. Am I eligible for admission in Ph.D. Program in Pakistan on the basis of M.Phil research based degree from a Foreign University?

A. All those who have foreign M.S./M.Phil. degree on the basis of Research or Course work from accredited/ chartered foreign Universities and after receiving equivalence certificate of 17 years schooling from Accreditation and Attestation Division of HEC, are eligible for admission into Ph.D. program.

Q. Which countries are academically/technically advanced?

A. Following countries are developed countries:

**List of Industrially/ Academically
Advanced Countries for Evaluation of Ph.D. Thesis
(For All Subjects Unless Noted)**

1 Australia	22 Ireland
2 Austria	23 Italy
3 Belgium	24 Japan
4 Bulgaria	25 Luxemburg
5 Canada	26 Netherland
6 China+	27 New Zealand
7 Czech Republic	28 Norway
8 Denmark	29 Poland
9 Egypt*	30 Portugal
10 Finland	31 Romania
11 France	32 Singapore
12 Germany	33 South Korea
13 Greece	34 Spain
14 Hong Kong	35 Sweden
15 Hungry	36 Switzerland
16 Iceland	37 Turkey
17 India	38 United Kingdom
18 Iran*	39 United States
19 Estonia~	40 Slovak Republic~
20 Croatia~	41 Slovenia~
21 Georgia~	

* For Oriental Languages (Arabic etc.) Islamiat, Islamic Studies

~ For Mathematics Only

+ For Science Engineering & Technology

Quality Assurance Division, HEC, Islamabad (November 17, 2011)

Q. Is there any financial assistance for GRE Test?

A. No.

Q. How many students a supervisor can supervise?

- A. a) The maximum number of Ph.D. students under the supervision of a full time faculty member will normally be 5 which may be increased to 8 under special circumstances in teaching departments subject to prior approval of the Higher Education Commission.
- b) Eminent faculty/scientists such as HEC distinguished professors, Fellow of Royal Societies (FRS) and those who have cumulative impact factor of 100 or more can supervise as many Ph.D. students as they wish.

Q. Can Adjunct faculty members (of the University) supervise Ph.D. Students?

- A. Yes, Adjunct faculty members (of the University), can supervise the Ph.D. students.

Q. How to calculate 50% (percentage score) from the ETS score card?

- A. 50% (percentage score) is calculated from total scaled score in each subject which is available in the GRE guide book on page number 14. For example, for Mathematics, total scaled score is 900 and its 50% percent is 450.

Q. Will Greenwich University notify clarifications mentioned in FAQs?

- A. Clarifications made in FAQs are approved by the competent authorities and need no further notification.



Greenwich University

DK-10, 38 Street, Darakshan, Phse VI, Defence Housing Authority
Karachi-75500, Pakistan. UAN: 111-202-303
Tel: +(9221) 3584-0397/98, Fax: +(9221) 3585-1910
E-mail: gu@greenwichuniversity.edu.pk, URL: www.greenwich.pk